

VESA Monitor Holder

for Inspectis LWD Boom Stand



Quality of Inspection

Standard VESA adapter for mounting 21" to 24" displays on vertical post of Inspectis LWD Stands. Mounting the display on the Stand, directly behind the inspection area, creates an ergonomic working position for operators of Inspectis Long Working Distance Digital Microscopes.



Compatible with all Inspectis $\phi 25\text{mm}$ (post) LWD Boom Stands. Compatible with 100x100mm and 75x75mm Display VESA-sizes.

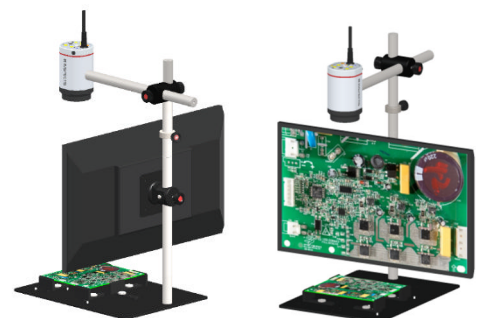
Specifications:

Size of VESA mounting holes	100x100mm and 75x75mm
Size of mounting hole	$\phi 25\text{mm}$ (ID)
Material:	Coated Steel
Weight:	400 g. Max.

Ordering Number/Name

HD-182 Inspectis VESA Monitor Holder for LWD Boom Stands

Reseller:



V1, 2019

www.inspect-is.com