



fitted with

- work equipment**
- connected load**
- power consumption**
- luminous flux**
- luminous efficacy**
- light distribution**
- light colour**
- color rendering index (CRI)**
- system of protection**
- class of protection**
- technology**
- usage**
- luminaire body**
- lamp cover**
- mains supply**

- fastening**
- dimension**

LED

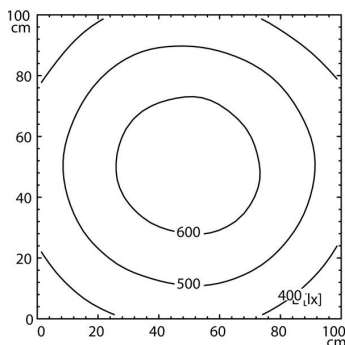
- Energy efficiency category A+
- without
- 20-28V; DC
- approx. 16 W
- approx. 1580 lm
- approx. 99 lm/W
- direct
- neutral white, approx. 5000 K
- > 80
- IP 67
- III
- switchable
- external
- aluminium, untreated, aluminium coloured anodised
- polycarbonate, clear
- built-in plug
- US-ConnectionStandard
- screws
- 535 mm



RSFPM 5/0.5 M

illuminance

distance: 100 cm
Em: 507 lx
Emax: 658 lx
Emin: 339 lx



luminous intensity

