



fitted with
 work equipment
 connected load
 power consumption
 luminous flux
 luminous efficacy
 light distribution
 light colour
 color rendering index (CRI)
 system of protection
 class of protection
 technology
 usage
 luminaire body
 lamp cover
 weight (net)
 mains supply
 design
 fastening
 dimension
 special features

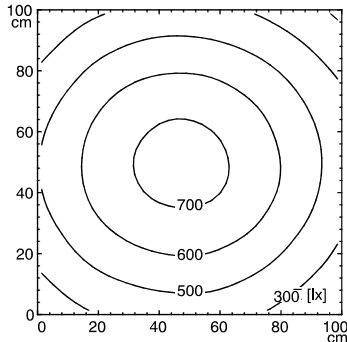
LED
 Energy efficiency category A+
 without
 20-28V; DC
 approx. 16 W
 approx. 1680 lm
 approx. 105 lm/W
 direct, wide-angled beam
 neutral white, approx. 5000 K
 > 80
 IP 67
 III
 switchable
 external
 aluminium, anodised, aluminium coloured anodised
 screen, clear
 approx. 0.8 kg
 built-in plug
 US~ConnectionStandard
 mounted version
 L-angle, clamp
 A=540 mm
 angle of illumination 90°



RSFM 4/0,05 P25-1

illuminance

distance: 100 cm
 Em: 541 lx
 Emax: 732 lx
 Emin: 326 lx



luminous intensity

